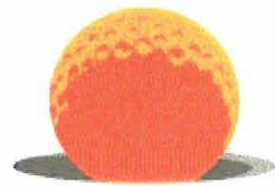


MATANZAS LIFT STATION IMPROVEMENTS

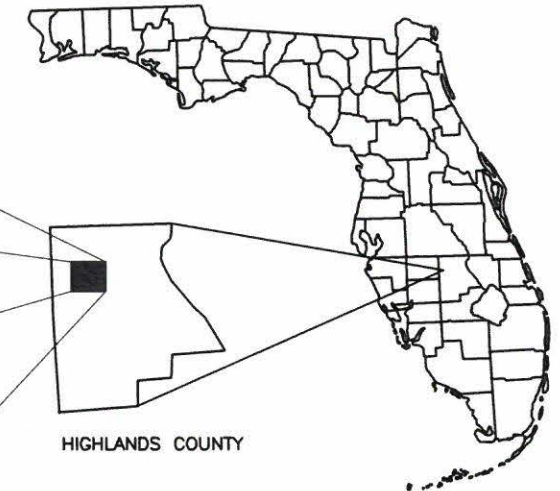
LOCATION MAP



SUN 'N LAKE
GOLF & RECREATION

BOARD OF SUPERVISORS

MEMBER	MIKE GILPIN
MEMBER	JOE BRANSON
MEMBER	DAN STEGALL
MEMBER	RAYMOND BROOKS
MEMBER	NEAL HOTELLING



VICINITY MAP
SCALE: N.T.S.



Know what's below.
Call before you dig.

PREPARED FOR:
**SUN 'N LAKE OF SEBRING
IMPROVEMENT DISTRICT**
CAS PROJECT No. 19-2049

FILE NAME: 10-2049-G-00-COVR.dwg

PERMITTING



CRAIG A. SMITH & ASSOCIATES
CONSULTING ENGINEERS-PLANNERS-SURVEYORS
21045 COMMERCIAL TRAIL - BOCA RATON, FLORIDA 33486
(561) 314-4445 WWW.CRAIGSMITH.COM
CERTIFICATE OF AUTHORIZATION NUMBER: LB0003110



GENE R. SCHRINER, P.E. (CIVIL)
DATE _____
FLORIDA PROFESSIONAL ENGINEER NO. 38821

GENERAL ABBREVIATIONS

ABRV	DESCRIPTION	ABRV	DESCRIPTION
AC	ASBESTOS CEMENT	MIN	MINIMUM
ALUM	ALUMINUM	MJ	MECHANICAL JOINT
ARV	AIR RELIEF VALVE	NPT	NATIONAL PIPE THREAD
BE	BURIED ELECTRIC	NTS	NOT TO SCALE
BFV	BUTTERFLY VALVE	OC	ON CENTER
B/L	BASELINE	OE	OVERHEAD ELECTRIC
BSP	BACTERIOLOGICAL SAMPLE POINT BURIED	OHW	OVERHEAD WIRE
BT	BUREID TELEPHONE CABLE	PC	POINT OF CURVATURE
CATV	CABLE TELEVISION	PHDPE	PERFORATED HIGH DENSITY POLYETHYLENE
CB	CATCH BASIN	PL	PROPERTY LINE
CIP	CAST IRON PIPE	PPD	POUNDS PER DAY
CL	CENTER LINE	PRB	POLLUTION RETARDANT BAFFLE
CONC	CONCRETE	PROP	PROPOSED
CV	CHECK VALVE	PSI	POUNDS PER SQUARE INCH
DIA	DIAMETER	PV	PLUG VALVE
DIP	DUCTILE IRON PIPE	PVC	POLY VINYL CHLORIDE
DIPS	DUCTILE IRON PIPE SIZE	RCP	REINFORCED CONCRETE PIPE
ELEV	ELEVATION	RE	RIM ELEVATION
EP	EXISTING PAVEMENT EDGE	RED	REDUCER
EXIST	EXISTING	REQD	REQUIRED
F&I	FURNISH AND INSTALL	RJ	RESTRAINED JOINT
FDEP	FLORIDA DEPT. OF ENVIRONMENTAL PROTECTION	RWM	RAW WATER MAIN
FH	FIRE HYDRANT	R/W	RIGHT-OF-WAY LINE
FM	FORCEMAIN	SAN	SANITARY SEWER PIPE
FPL	FLORIDA POWER & LIGHT	SD	STORM SEWER
GE	GRATE ELEVATION	TEL	TELEPHONE
GV	GATE VALVE	TYP	TYPICAL
HDPE	HIGH DENSITY POLYETHYLENE	UR	UTILITY RISER
INV	INVERT ELEVATION	BE	BURIED ELECTRIC
LAT	LATERAL	VCP	VITRIFIED CLAY PIPE
LF	LINEAR FEET	WL	WATER LINE
MAX	MAXIMUM	WM	WATER METER
MFGR	MANUFACTURER	WTP	WATER TREATMENT PLANT
MH	MANHOLE	WWTP	WASTE WATER TREATMENT PLANT

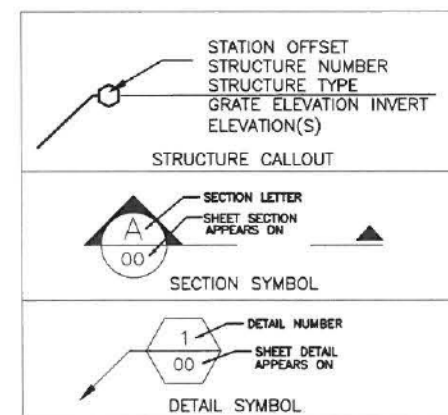
PIPE FITTINGS

FITTING DESCRIPTION	SYMBOL			
	FLANGED	MECH	P.V.C.	SINGLE LINE
PROPOSED 11.25° BEND				
PROPOSED 22.5° BEND				
PROPOSED 45° BEND				
PROP. 45° BEND (TURN DOWN)				
PROP. 45° BEND (TURN UP)				
PROPOSED 90° BEND				
PROP. 90° BEND (TURN DOWN)				
PROP. 90° BEND (TURN UP)				
PROPOSED CROSS				
PROPOSED TEE				
PROP. TEE (TURN UP)				
PROP. TEE (TURN DOWN)				
PROPOSED WYE OR LATERAL				
FLANGE FITTING FRONT VIEW				
FLANGE (UNION) SIDE / TOP VIEW				
PROPOSED CHECK VALVE				
PROPOSED GATE VALVE SIDE VIEW				
PROPOSED GATE VALVE TOP VIEW				
PROPOSED BALL VALVE				
PROPOSED PLUG VALVE				
PROPOSED REDUCER				
PROP. CAP W/ RESTRAINED JOINT				
PROP. PLUG W/ RESTRAINED JOINT				

SHEET INDEX

NUMBER / SHEET	DESCRIPTION
G-00	COVER SHEET
G-01	CIVIL ABBREVIATIONS, INDEX & LEGEND SHEET
V-01 - V-02	MAP OF TOPOGRAPHIC SURVEY
C-01	LIFT STATION SITE PLAN
C-02	LIFT STATION PROFILE VIEW
C-03	LIFT STATION DETAILS
E-1 - E-7	ELECTRICAL PLANS

TAGS



PATTERNS

SYMBOL	DESCRIPTION
	PROPOSED ASPHALT
	PROPOSED PAVEMENT RESTORATION
	PROPOSED CONCRETE
	PROPOSED WORK
	DEMOLITION

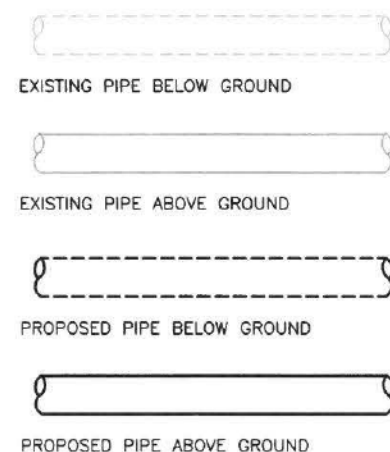
LINE WEIGHTS

EXISTING	SHADED SOLID LINES & TEXT DENOTE EXISTING EQUIPMENT, STRUCTURES AND WORK.
FUTURE	NON-SHADED DASHED LINES & TEXT DENOTE FUTURE EQUIPMENT, STRUCTURES AND WORK.
PROPOSED	NON-SHADED, BOLD, SOLID LINES & TEXT DENOTE PROPOSED EQUIPMENT, STRUCTURES AND WORK.

NOTE: FOR GRAPHICAL CLARIFICATION ON PLANS CONTAINING BACKGROUND AERIAL PHOTOS EXISTING ITEMS ARE SHOWN HOLLOW WHERE AS PROPOSED ARE SHOWN SOLID.



MECHANICAL / DETAIL SHEET PIPE SYMBOLS



SYMBOL DESCRIPTION	SYM.	SYMBOL DESCRIPTION	SYM.
SANITARY AIR RELEASE VALVE		PRESSURE GAUGE	
CORP STOP		VENT AND FILTER	
COUPLING SIDE / TOP VIEW		MAG METER	
GRUVLOK FITTING		WATER LINE AIR RELEASE VALVE	
KAMLOK FITTING		WALL PIPE	

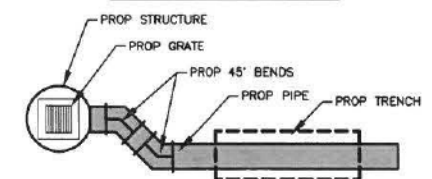
SYMBOL DESCRIPTION	SYM.
PROP. FIRE HYDRANT ASSEMBLY	
PROP. DOUBLE GATE VALVE	
PROPOSED GLOBE VALVE	
PROPOSED CAP AND BLOWOFF	
PROP. BACK FLOW PREVENTER	

GENERAL SYMBOL LEGEND

SYMBOL DESCRIPTION	SYM.
BACTERIOLOGICAL SAMPLING POINT	
PROPOSED GRADE	
BOLLARD	
PIPE BREAK	
GRADING FLOW	
PIPE FLOW	
FIRE HYDRANT	
CATCH BASIN	
MANHOLE	

NOTE: THE LEGEND SHOWN HEREON IS REPRESENTATIVE OF ALL CAS DRAFTING STANDARDS AND IS NOT PROJECT SPECIFIC.

UTILITY PLAN PIPE LEGEND



NO.	DATE	REVISION	BY

Date: 09/13/19
Designed: GAG
Drawn: MM
Checked: GRS

APPROVED BY: GENE R. SCHRINER, P.E.
DATE: _____
FLORIDA PROFESSIONAL ENGINEER NO. 38821

CRAIG A. SMITH & ASSOCIATES
CONSULTING ENGINEERS-PLANNERS-SURVEYORS
21045 COMMERCIAL TRAIL
BOCA RATON, FLORIDA 33486
(561) 314-4445
CERTIFICATE NO. LB0003110

PREPARED FOR:
SUN 'N LAKE
IMPROVEMENT DISTRICT

MATANZA LIFT STATION
IMPROVEMENTS
CIVIL ABBREVIATIONS, INDEX
& LEGEND SHEET







FILE NAME: 10-2049-G-01-LGND.dwg
LAST SAVED: 09/17/19 - 11:38am
CAS PROJECT NUMBER
19-2049

SHEET
G-01

SCALE: N.T.S.



SYM.	DESCRIPTION
------	-------------

I.E.	INVERT ELEVATION
D & U.E	DRAINAGE & UTILITY EASEMENT
LB	LICENSED BUSINESS
PVC	POLY VINYL CHLORIDE
R.E.	RIM ELEVATION
P.B.	PLAT BOOK
H.C.P.R.	HARDEE COUNTY PUBLIC RECORDS
PGS	PAGES
	TEE PIPE FITTING
 SV	SEWER VALVE
 SMH	SANITARY MANHOLE
	STAND PIPE
	GENERIC TREE (TRG)
	PALM TREE (TRPL)

LEGAL DESCRIPTION:

BEING PORTIONS OF SUN 'N LAKE OF SEBRING UNIT 13, ACCORDING TO THE PLAT THEREOF AS
RECORDED IN PLAT BOOK 9, PAGE 71, OF THE PUBLIC RECORDS OF HIGHLANDS COUNTY, FLORIDA.

SURVEYOR'S NOTES:

1. REPRODUCTIONS OF THIS SURVEY ARE NOT VALID WITHOUT THE SIGNATURE AND ORIGINAL RAISED SEAL OF A FLORIDA LICENSED SURVEYOR AND MAPPER.
2. NO SEARCH OF THE PUBLIC RECORDS WAS UNDERTAKEN FOR EASEMENTS, RIGHTS OF WAYS, RESTRICTIONS OR OTHER RECORDED OR EVIDENCE OF UNRECORDED DOCUMENTS BY THIS FIRM, NOR WERE ANY SUCH RECORDS SUPPLIED.
3. ELEVATIONS SHOWN HEREON ARE RELATIVE TO NORTH AMERICAN VERTICAL DATUM OF 1988 (NAVD '88) AND ARE BASED ON NATIONAL GEODETIC SURVEY MONUMENT 758386A (HAVING A PUBLISHED ELEVATION OF 165.30 FEET)
4. THE INTENT OF THIS "MAP OF TOPOGRAPHIC SURVEY" IS TO AID IN THE DESIGN OF INFRASTRUCTURE IMPROVEMENTS (SANITARY SEWER) WITHIN THE AREAS SHOWN HEREON. THIS IS NOT A BOUNDARY SURVEY.
5. THERE MAY BE UNDERGROUND "FOOTINGS", DRAINAGE, UTILITIES, ETC. NOT SHOWN OR INDICATED HEREON.
6. THE ACCURACY OF THIS SURVEY IS PREMISED ON THE EXPECTED USE OF THE SURVEY. THE EXPECTED USE/PREMISE OF THIS SURVEY IS THE DESIGN OF A REPLACEMENT LIFT STATION AND ASSOCIATED STRUCTURES. TRIMBLE R2 AND R6 GNSS INSTRUMENTS WITH TRIMBLE TSC-3 DATA COLLECTION WERE UTILIZED TO ESTABLISH HORIZONTAL SURVEY CONTROL AND LOCATE MISC. FEATURES IN AREAS REQUESTED. A TOPCON ES-102 INSTRUMENT WITH RANGER (TDS) DATA COLLECTION WAS UTILIZED TO COLLECT DATA IN BOTH THE HORIZONTAL AND VERTICAL PLANES. A WILD GT2 LEVEL WAS USED TO TRANSFER THE ELEVATION TO THE SITE.
7. THE DIGITAL DATA PROVIDED IS INTENDED TO BE VIEWED AT A SCALE OF 1" = 40' OR SMALLER.
8. ALL DISTANCES AND ELEVATIONS SHOWN HEREON ARE IN ACCORD WITH THE UNITED STATES STANDARD USING FEET AND DECIMALS THEREOF.

SURVEYORS CERTIFICATE:

I HEREBY CERTIFY THAT THIS SURVEY IS ACCURATE TO THE BEST OF MY KNOWLEDGE AND BELIEF AND MEETS APPLICABLE SECTIONS OF THE STANDARDS OF PRACTICE AS SET FORTH BY THE FLORIDA BOARD OF PROFESSIONAL SURVEYORS AND MAPPERS IN CHAPTER 5J-17, FLORIDA ADMINISTRATIVE CODE, PURSUANT TO SECTION 472.027, FLORIDA STATUTES, SUBJECT TO QUALIFICATIONS NOTED HEREON.

FOR THE FIRM BY: _____

BT:
ROBERT D. KEENER
PROFESSIONAL SURVEYOR & MAPPER
FLORIDA REGISTRATION NO. 4846

FIELD DATE: 06/24/19

SIGNATURE DATE: _____

[illegible]

PREPARED FOR

SUN N LAKE

CRAIG A. SMITH & ASSOCIATES
CONSULTING ENGINEERS-PLANNERS-SURVEYORS

 21045 COMMERCIAL TRAIL
BOCA RATON, FLORIDA 33486
(561) 314-4445
CERTIFICATE NO. LB0003110 

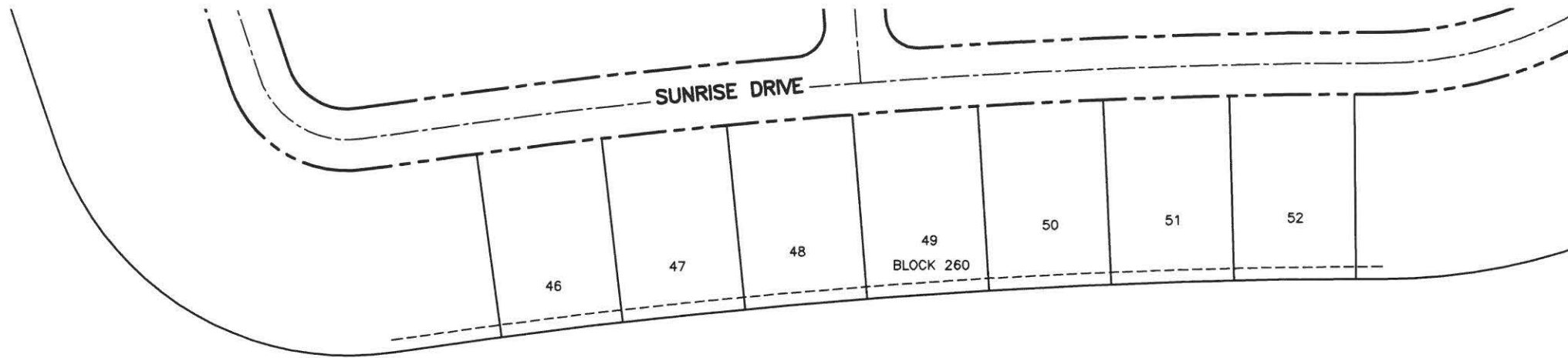
MAP OF
TOPOGRAPHIC
SURVEY

MATANZAS LIFT STATION
&
6527 MATANZAS DR./ MANHOLE DATA

FILE NAME: 20-2049-V-01-SRVY.dwg
LAST SAVED: 06/25/19 - 8:46am

CAS PROJECT NUMBER
19-2049

SHEET
V-01
OF
02



0 30 60 120
HORIZONTAL GRAPHIC SCALE
24" X 36" SCALE: 1" = 60'-0"
11" X 17" SCALE: 1" = 120'-0"

SMH
R.E.=158.03'
I.E.=152.55(N), 8" PVC
I.E.=152.39(SE), 8" PVC
MID=152.51
BOTTOM=152.96'

8" PVC
6" PVC
4" METAL PIPES
IN VAULT
2' DIAMETER TANK
LIFT STATION
BLOCK 276

89
6" WET WELL=156.70'
I.E.=150.95(NW), 8" PVC
I.E.=153.22(NW), 6" PVC
I.E.=144.35(S), 8" PVC

MATANZAS DR.

ALEDO AVENUE

BLOCK 281



R.E.=150.90'
I.E.=148.83(NW), 4" PVC
I.E.=148.85(SW), 4" PVC
I.E.=148.83(E), 6" PVC

FINISHED FLOOR
ELEVATION=151.25
HOUSE # 6527

NO.	DATE	FB / PG	DWN	REVISION	CKD
2	06/25/19	1911/56	SEE	REVISED INVERT NORTH MANHOLE	RDK
1	05/17/19	1911/56	SEE	MAP OF TOPOGRAPHIC SURVEY	RDK

PREPARED FOR
SUN N LAKE

CRAIG A. SMITH & ASSOCIATES
CONSULTING ENGINEERS-PLANNERS-SURVEYORS
21045 COMMERCIAL TRAIL
BOCA RATON, FLORIDA 33486
(561) 314-4445
CERTIFICATE NO. LB0003110

MAP OF
TOPOGRAPHIC
SURVEY

MATANZAS LIFT STATION
&
6527 MATANZAS DR. / MANHOLE DATA

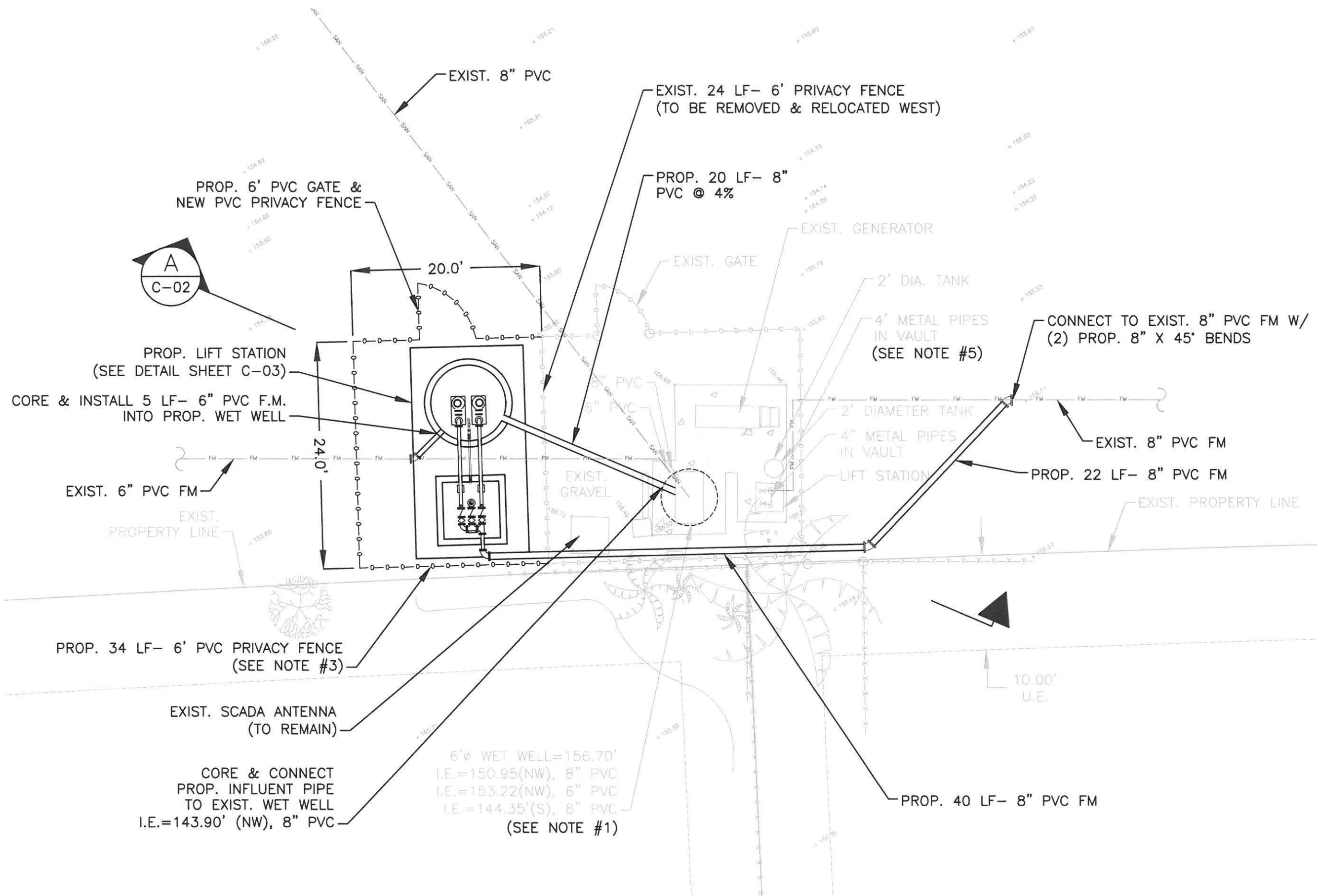
FILE NAME: 20-2049-V-02-SRVY.dwg
LAST SAVED: 06/25/19 - 8:46am
CAS PROJECT NUMBER
19-2049

SHEET
V-02
OF
02



0 2.5 5 10
HORIZONTAL GRAPHIC SCALE
24" X 36" SCALE: 1" = 5'-0"
11" X 17" SCALE: 1" = 10'-0"

- NOTES:
1. CONTRACTOR SHALL CONVERT EXISTING 6-FOOT WET WELL INTO A TERMINAL MANHOLE. FILL BOTTOM OF WET WELL W/ CONCRETE TO PROPOSED BASE ELEVATION. FILL ALL LEAKS/CRACKS W/ HYDRAULIC CEMENT.
 2. LINE TERMINAL MANHOLE W/ 2 PART CEMENTITIOUS LINER, SEE SPECIFICATIONS FOR MATERIALS.
 3. EXTEND EXISTING PVC FENCE AS SHOWN, INCLUDE PROPOSED 6-FOOT GATE ON NORTH SIDE OF NEW WET WELL.
 4. REMOVE EXISTING WET WELLS, EXISTING PUMPS, RAILS & ALL HARDWARE.
 5. REMOVE ALL PIPE & FITTINGS FROM VALVE BOX. PLUG ALL INLET/OUTLET HOLES IN VALVE BOX WITH CONCRETE, THEN FILL BOX W/ SAND.



NO.	DATE	REVISION	BY

Date: 09/13/19
Designed: GAG
Drawn: MM
Checked: GRS

APPROVED BY: GENE R. SCHRINER, P.E.
DATE: _____
FLORIDA PROFESSIONAL ENGINEER NO. 38821

CRAIG A. SMITH & ASSOCIATES
CONSULTING ENGINEERS-PLANNERS-SURVEYORS
21045 COMMERCIAL TRAIL
BOCA RATON, FLORIDA 33486
(561) 314-4445
CERTIFICATE NO. LB0003110

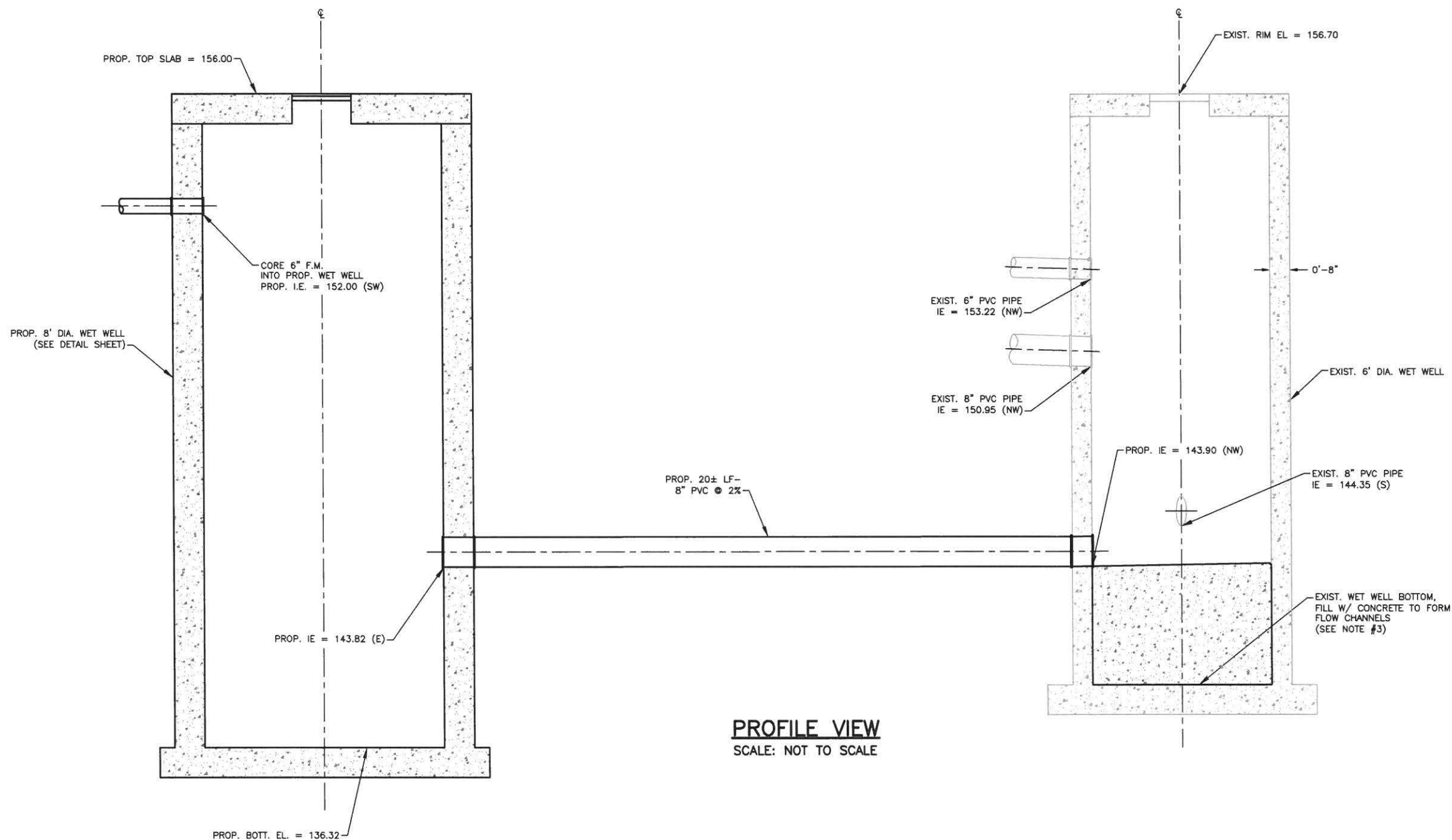
PREPARED FOR:
**SUN 'N LAKE
IMPROVEMENT DISTRICT**

**MATANZA LIFT STATION
IMPROVEMENTS**

SITE PLAN

FILE NAME: 30-2049-C-01-SITE.dwg
LAST SAVED: 10/01/19 - 11:42am
CAS PROJECT NUMBER
19-2049

SHEET
C-01



PROFILE VIEW
SCALE: NOT TO SCALE

- NOTE:**
1. INSIDE OF EXISTING WET WELL SHALL BE COATED WITH MAINSTAY COATING, AS PER SPECIFICATION 09980.
 2. REPAIR EXISTING POINTS OF GROUNDWATER INFILTRATION IN EXISTING WET WELL. PLUG HOLES W/ HYDRAULIC CEMENT AND FILL W/ CONCRETE TO FORM FLOW CHANNELS AND LINE WITH MAINSTAY COATING PER SPECIFICATION 09980.
 3. INSIDE OF EXISTING WET WELL SHALL HAVE PROPER SURFACE PREPARATION. ABRASIVE BLAST CLEAN TO REMOVE ALL LAITANCE, FINES & CONTAMINATION. ALL SURFACE VOIDS, CRACKS, PINHOLES AND OTHER DEFECTS MUST BE FILLED FLUSH WITH THE ADJACENT SURFACES BY PUTTY KNIFE, TROWEL, FLOAT, SQUEEGEE OR OTHER SUITABLE METHOD.
 4. CONTRACTOR TO CONDUCT SPARK TEST TO TEST INTEGRITY OF NEW LINER AS PER SPECIFICATION 09980.

NO.	DATE	REVISION	BY

Date: 09/13/19
Designed: GAG
Drawn: MM
Checked: GRS

APPROVED BY: GENE R. SCHRINER, P.E.
DATE: _____
FLORIDA PROFESSIONAL ENGINEER NO. 38821

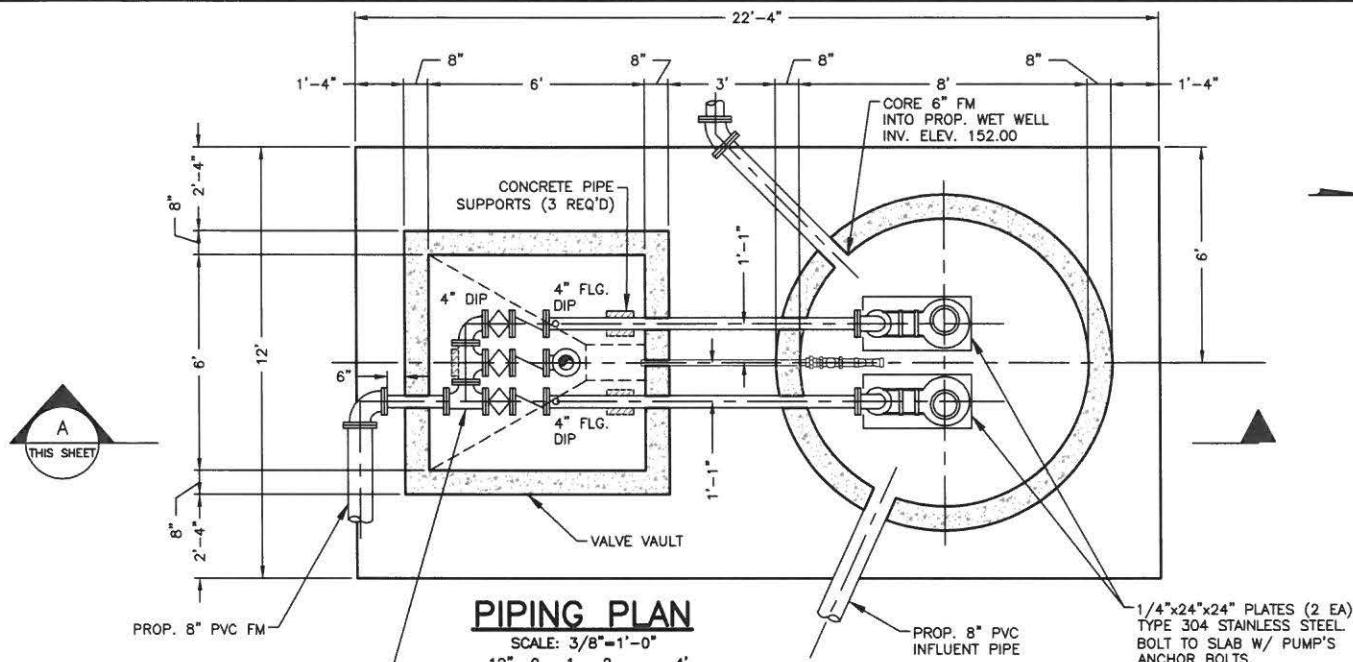
CRAIG A. SMITH & ASSOCIATES
CONSULTING ENGINEERS-PLANNERS-SURVEYORS
21045 COMMERCIAL TRAIL
BOCA RATON, FLORIDA 33486
(561) 314-4445
CERTIFICATE NO. LB0003110

PREPARED FOR:
SUN 'N LAKE
IMPROVEMENT DISTRICT

MATANZA LIFT STATION
IMPROVEMENTS
PROFILE VIEW

FILE NAME: 30-2049-C-02-PRO.dwg
LAST SAVED: 09/30/19 - 2:03pm
CAS PROJECT NUMBER
19-2049

SHEET
C-02

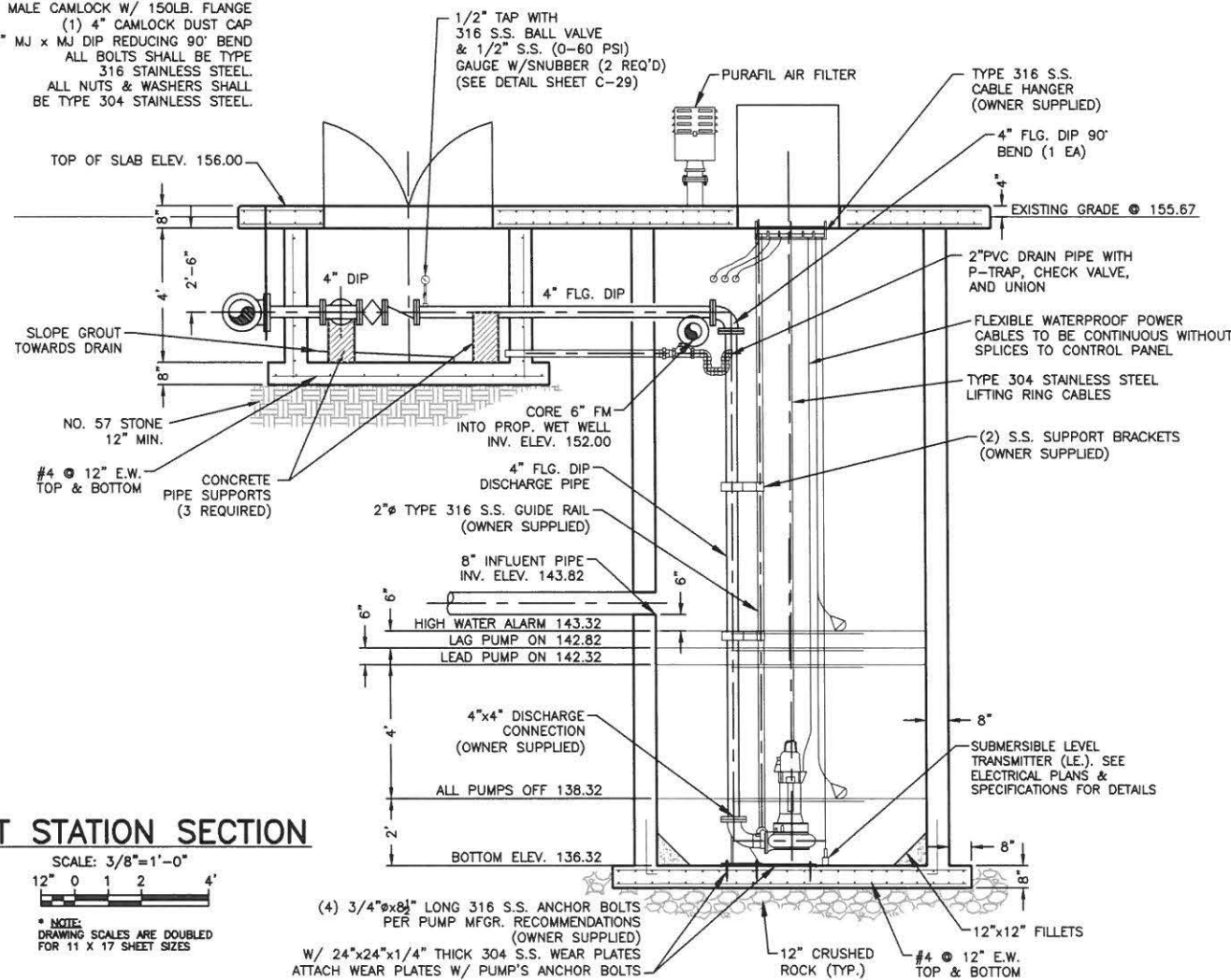


PIPING PLAN

SCALE: 3/8"=1'-0"

* NOTE:
DRAWING SCALES ARE DOUBLED
FOR 11 X 17 SHEET SIZES

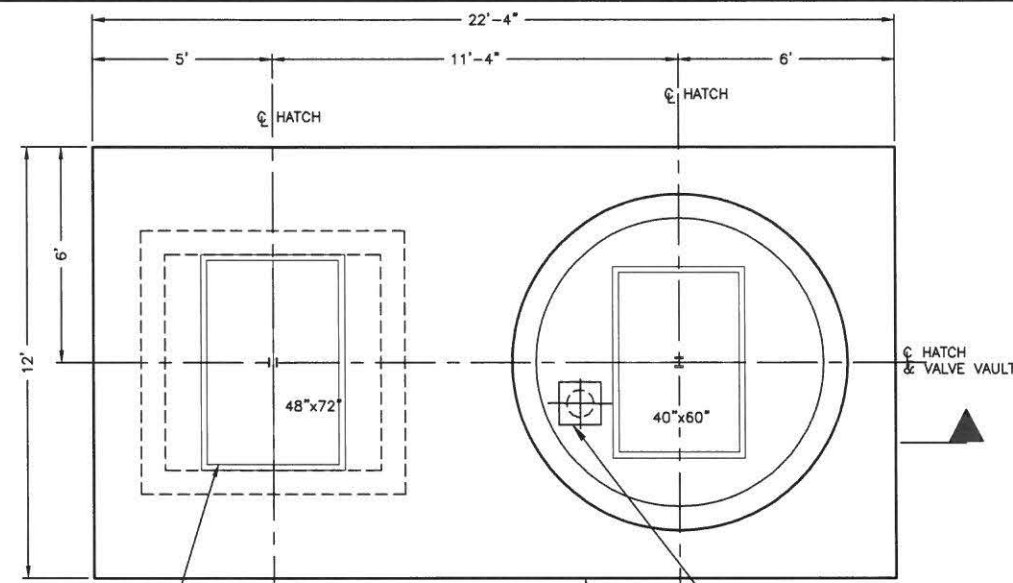
- VALVE ASSEMBLY:
- (2) 4" FLG. DIP TEE
 - (2) 4" FLG. DIP 90° BEND
 - (1) 4" FLG. DIP PLUG VALVE
 - (2) 4" FLG. GLOBE VALVES
 - (3) 4" FLG. DIP SWING WEIGHTED CHECK VALVE
 - (1) 4" MALE CAMLOCK W/ 150LB. FLANGE
 - (1) 4" CAMLOCK DUST CAP
 - (1) 8"x4" MJ x MJ DIP REDUCING 90° BEND
- ALL BOLTS SHALL BE TYPE 316 STAINLESS STEEL.
ALL NUTS & WASHERS SHALL BE TYPE 304 STAINLESS STEEL.



LIFT STATION SECTION

SCALE: 3/8"=1'-0"

* NOTE:
DRAWING SCALES ARE DOUBLED
FOR 11 X 17 SHEET SIZES



TOP SLAB PLAN

SCALE: 3/8"=1'-0"

* NOTE:
DRAWING SCALES ARE DOUBLED
FOR 11 X 17 SHEET SIZES

10" THICK CONC. SLAB WITH
#5 @ 6" O.C. / E.W. TOP AND BOTTOM,
AND 3/4" CHAMFER AROUND ALL EDGES

ACCESS FRAMES AND COVERS TO BE SUPPLIED
BY PUMP EQUIPMENT MANUFACTURER,
REINFORCED DIAMETER ALUMINUM.
HASP EQUIPPED WITH SAFETY LOCKING HANDLE
IN OPEN POSITION AND 316L STAINLESS STEEL
HINGES. PROVIDE STAINLESS STEEL LOCKING
SYSTEM FOR ALL HATCHES.

GENERAL NOTES

- ALL CONSTRUCTION SHALL CONFORM TO THE FLORIDA BUILDING CODE, LATEST REVISION.
- THE CONTRACTOR SHALL VERIFY ALL INFORMATION SHOWN PRIOR TO CONSTRUCTION AND ANY DISCREPANCY SHALL BE REPORTED TO THE ENGINEER.
- CONCRETE SHALL NOT HAVE LESS THAN 3000 PSI COMPRESSIVE STRENGTH AT 28 DAYS. PRECAST CONCRETE SHALL BE 4000 PSI CLASS II MINIMUM. REINFORCING STEEL SHALL CONFORM TO ASTM SPEC. A-615 AND SHALL BE DEFORMED ACCORDING TO ASTM SPEC. 305. ALL PIPE OPENINGS SHALL BE CAST AT TIME OF FABRICATION.
- DUCTILE IRON PIPE SHALL BE AWWA C151, CLASS 350, CERAMIC EPOXY COATED WITH PROTECTO 401 CERAMIC EPOXY LINING.
- DUCTILE IRON FITTINGS SHALL BE AWWA C110/C153, FLANGED JOINTS CERAMIC COATED WITH PROTECTO 401 CERAMIC EPOXY LINING.
- FOLLOW ALL PROCEDURES FOR SEALING CUT ENDS AND REPAIRING FIELD DAMAGED AREAS OF PROTECTO 401 CERAMIC EPOXY LINED PIPES AND FITTINGS.
- SHOP DRAWINGS FOR THE COMPLETE LIFT STATION SHALL BE SUBMITTED TO THE ENGINEER FOR APPROVAL PRIOR TO DELIVERY TO THE JOB SITE.
- FIVE (5) COPIES OF OPERATION AND MAINTENANCE MANUAL ARE TO BE SUBMITTED TO THE CITY AFTER ENGINEER'S APPROVAL.
- OPENINGS AROUND ALL PIPES SHALL BE SEALED WITH EMBECO MORTAR.
- ALL UNSUITABLE MATERIAL SHALL BE REMOVED WITHIN THE LIMITS OF CONSTRUCTION.
- OUTSIDE OF NEW VALVE BOX SHALL BE COATED WITH COAL TAR EPOXY.
- CONTRACTOR SHALL COORDINATE INSTALLING THE TWO "OWNER SUPPLIED" SUBMERSIBLE PUMPS W/ UTILITY STAFF WHO HAS PURCHASED THESE PUMPS.
- CHECK VALVES SHALL BE IRON BODY, EPOXY COATED, BRONZE MOUNTED, SWING CHECK, LEVER AND WEIGHT.
- ELECTRICAL PANEL SHALL HAVE A NEMA 4X STAINLESS STEEL ENCLOSURE & UL LABEL. ALL CONTROL WIRING TO HAVE WIRE NUMBERS W/ A DATA FLOW TCU CONTROLLER.
- ELECTRICAL PANEL MUST HAVE A STORAGE COMPARTMENT INSIDE PANEL DOOR FOR OPERATION AND MAINTENANCE MANUAL.
- ELECTRICAL SYSTEM SHALL BE PROTECTED BY A LIGHTNING ARRESTOR AND SURGE CAPACITOR.
- POWER TOOL OUTLET TO BE MOUNTED IN DEAD FRONT AND MUST BE A GFI RECEPTACLE.
- SEAL-OFFS TO BE PROVIDED ON ALL ELECTRICAL CONDUITS ENTERING CONTROL PANEL FROM WETWELL.
- ALL PIPE SUPPORTS, CLAMPS, AND FASTENERS IN THE WETWELL AND VALVE BOX SHALL BE TYPE 304 STAINLESS STEEL. ALL BOLTS SHALL BE TYPE 316 STAINLESS STEEL (UNLESS OTHERWISE NOTED). ALL NUTS AND WASHERS SHALL BE TYPE 304 STAINLESS STEEL (UNLESS OTHERWISE NOTED.)
- PUMPS TO HAVE STAINLESS STEEL NAME PLATE IDENTIFICATION.
- SEE ELECTRICAL DRAWINGS FOR CONTROL PANEL INFORMATION.

LIFT STATION DATA TABLE

PUMP MANUFACTURER (OWNER SUPPLIED)	FLYGT-XYLEM
PUMP MODEL NUMBER	NP-3102 SH-3
PUMP IMPELLER NUMBER	135MM IRON IMPELLER
QUANTITY OF PUMPS PER STATION	2
DESIGN FLOW (CAPACITY EA.-G.P.M.)	285
DESIGN TDH (FEET)	47
MOTOR H.P. REQUIRED	6.5
SHUT OFF HEAD (FEET)	102
MOTOR SPEED (R.P.M.)	3440
MOTOR SERVICE FACTOR	1.25
ELECTRICAL SERVICE	3Ø 230V/480V 60Hz

NO.	DATE	REVISION	BY

Date: 09/13/19
Designed: GAG
Drawn: MM
Checked: GRS

APPROVED BY: GENE R. SCHRINER, P.E.
DATE: _____
FLORIDA PROFESSIONAL ENGINEER NO. 38821

CRAIG A. SMITH & ASSOCIATES
CONSULTING ENGINEERS-PLANNERS-SURVEYORS
21045 COMMERCIAL TRAIL
BOCA RATON, FLORIDA 33486
(561) 314-4445
CERTIFICATE NO. LB0003110

PREPARED FOR:
**SUN 'N LAKE
IMPROVEMENT DISTRICT**

**MATANZA LIFT STATION
IMPROVEMENTS**

LIFT STATION DETAILS

FILE NAME: 30-2048-C-03-LS.dwg
LAST SAVED: 09/27/19 - 2:12pm
CAS PROJECT NUMBER
19-2049

SHEET
C-03